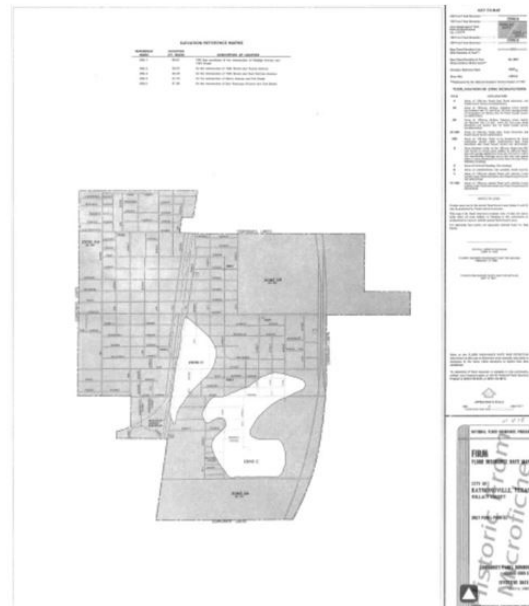
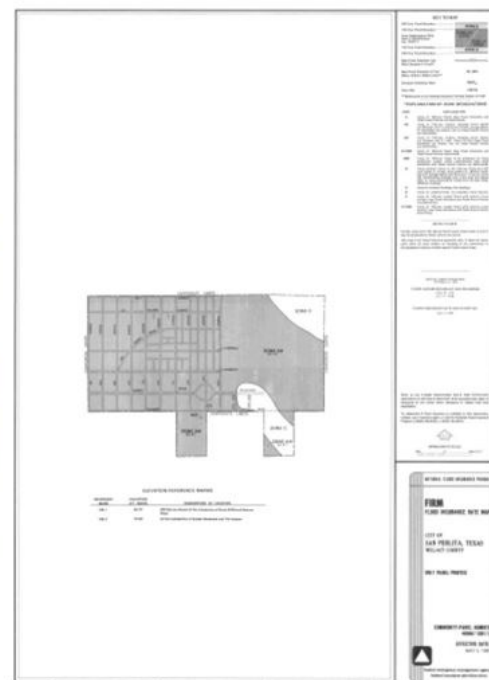


# **Web Appendix**

## **Chapter 1: Salience and Households' Flood Insurance Decisions**



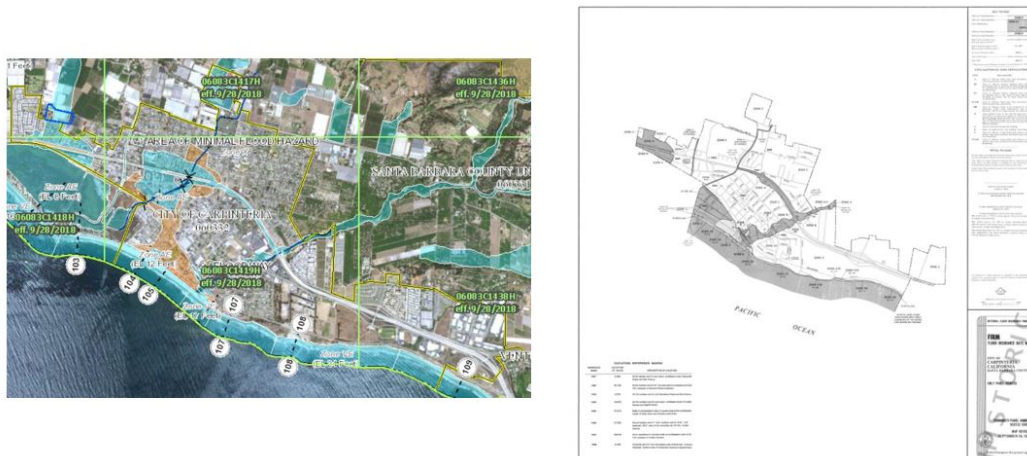
Example 1: City of Raymondville, Willacy County, Texas. *Source:* The Federal Emergency Management Agency.



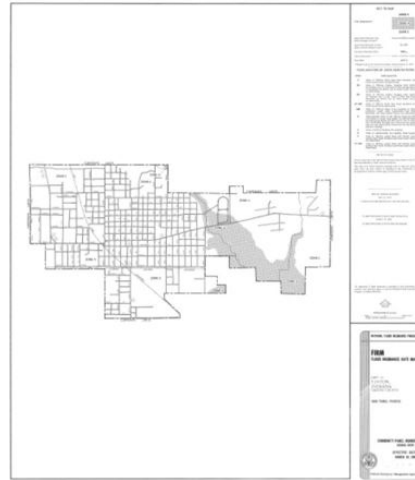
Example 2: City of San Perlita, Willacy County, Texas. *Source:* The Federal Emergency Management Agency.



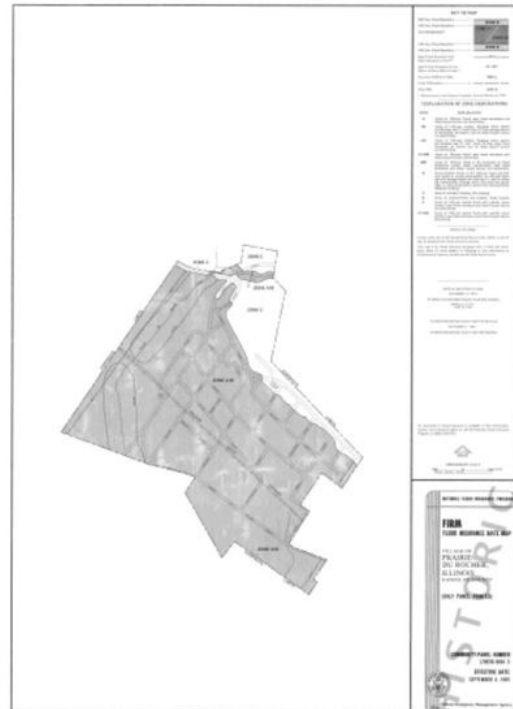
Example 3: City of Mendota, Fresno County, California. *Source:* The Federal Emergency Management Agency.



Example 4: City of Carpinteria, Santa Barbara County, California. *Source:* The Federal Emergency Management Agency.



Example 5: City of Linton, Greene County, Indiana. *Source:* The Federal Emergency Management Agency.

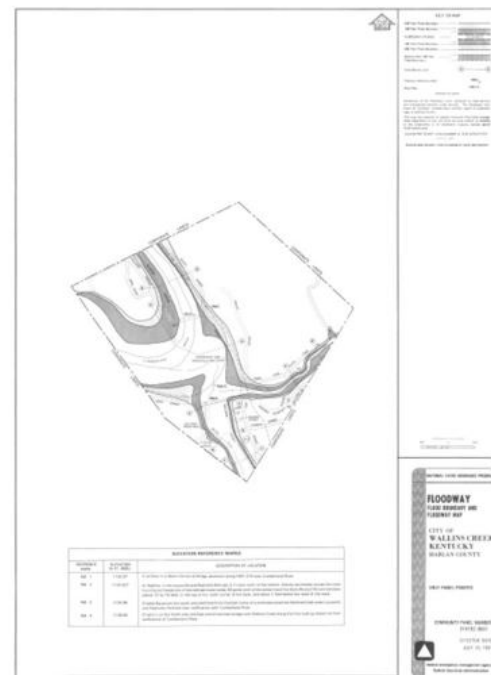


Example 6: Village of Prairie Du Rocher, Randolph County, Illinois. *Source:* The Federal Emergency Management Agency.

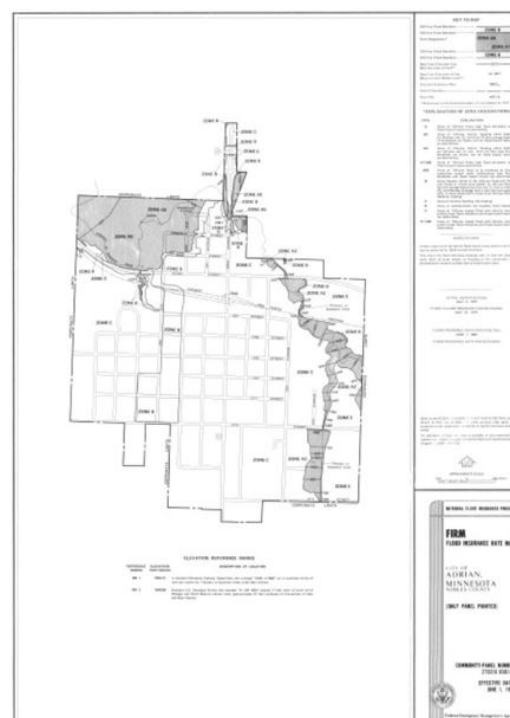


Example 7: City of Harlan, Harlan County, Kentucky. *Source:* The Federal Emergency Management Agency.

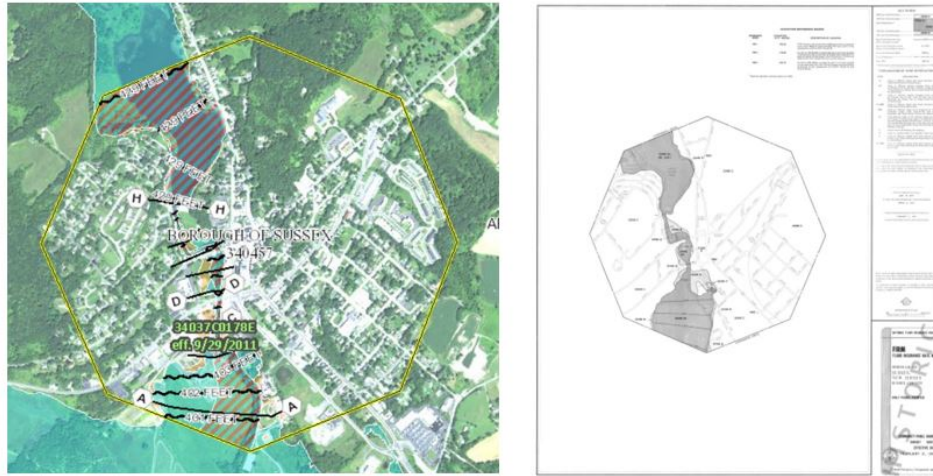




Example 8: City of Wallins Creek, Harlan County, Kentucky. *Source:* The Federal Emergency Management Agency.



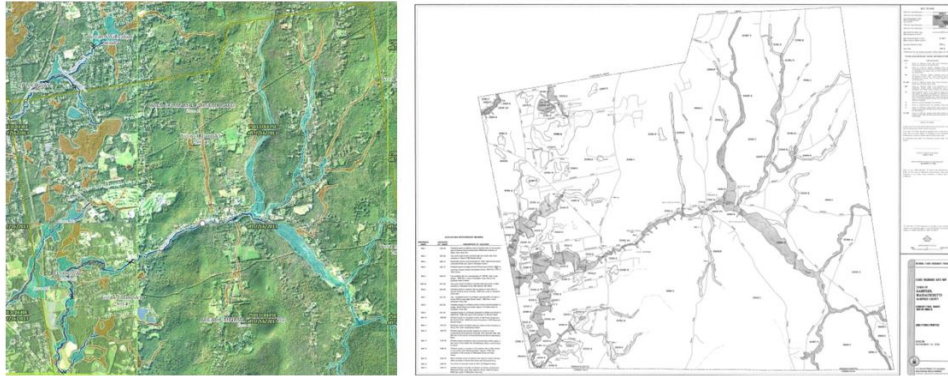
Example 9: City of Adrian, Nobles County, Minnesota. *Source:* The Federal Emergency Management Agency.



Example 10: Borough of Sussex, Sussex County, New Jersey. *Source:* The Federal Emergency Management Agency.



Example 11: Town of Rayville, Richland Parish, Louisiana. *Source:* The Federal Emergency Management Agency.

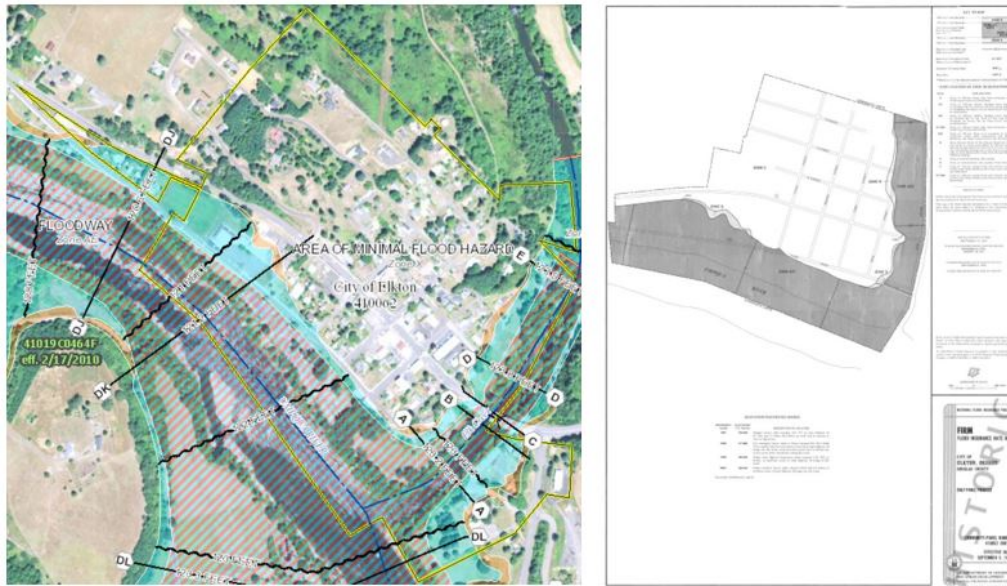


Example 12: Town of Hampden, Hampden County, Massachusetts. *Source:* The Federal Emergency Management Agency.



Example 13: Town of Vardaman, Calhoun County, Mississippi. *Source:* The Federal Emergency Management Agency.

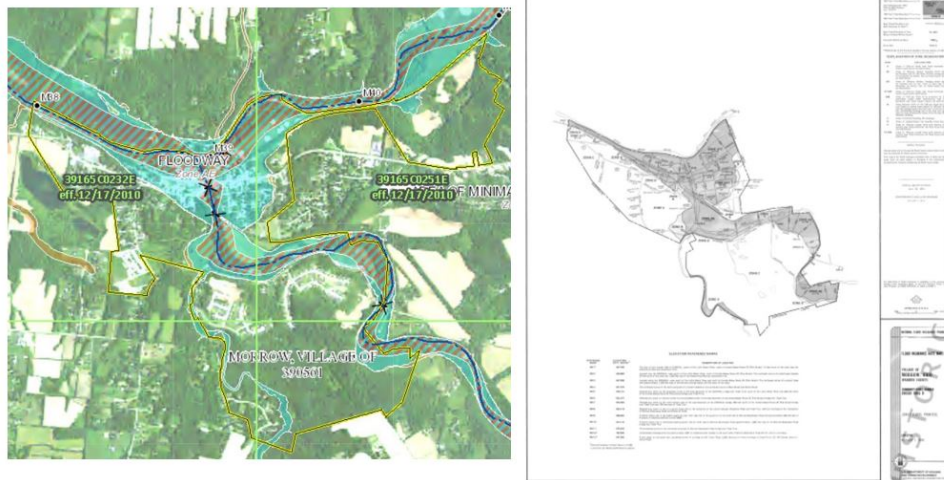




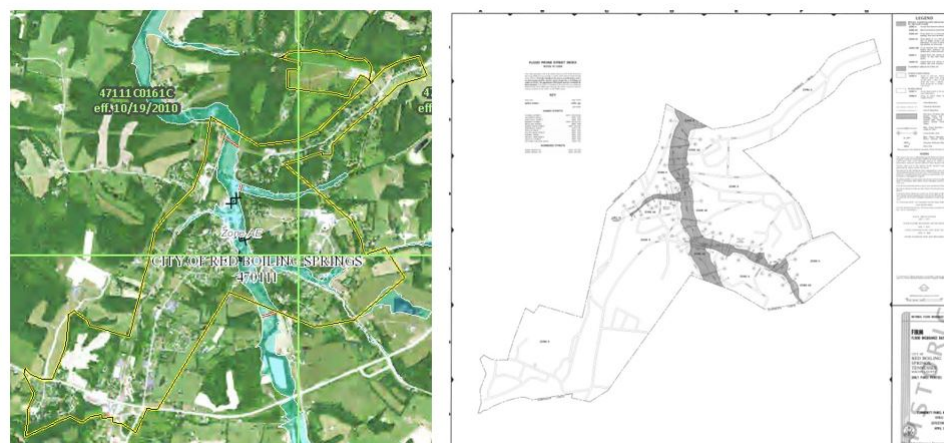
Example 14: City of Elkton, Douglas County, Oregon. *Source:* The Federal Emergency Management Agency.



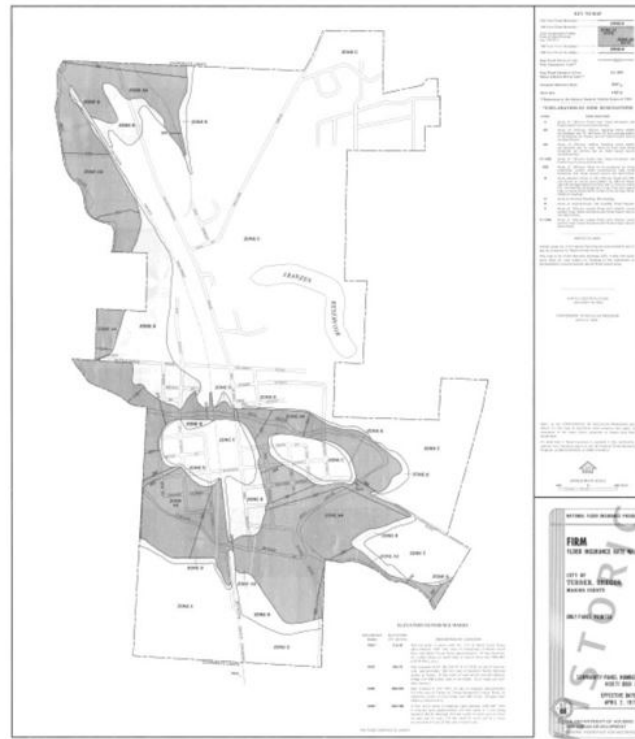
Example 15: City of Bottineau, Bottineau, North Dakota. *Source:* The Federal Emergency Management Agency.



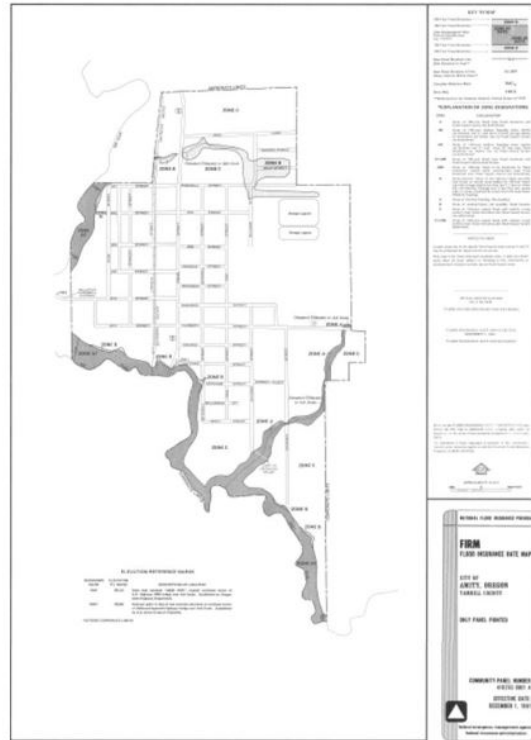
Example 16: Village of Morrow, Warren County, Ohio. *Source:* The Federal Emergency Management Agency.



Example 17: City of Red Boiling Springs, Macon County, Tennessee. *Source:* The Federal Emergency Management Agency.

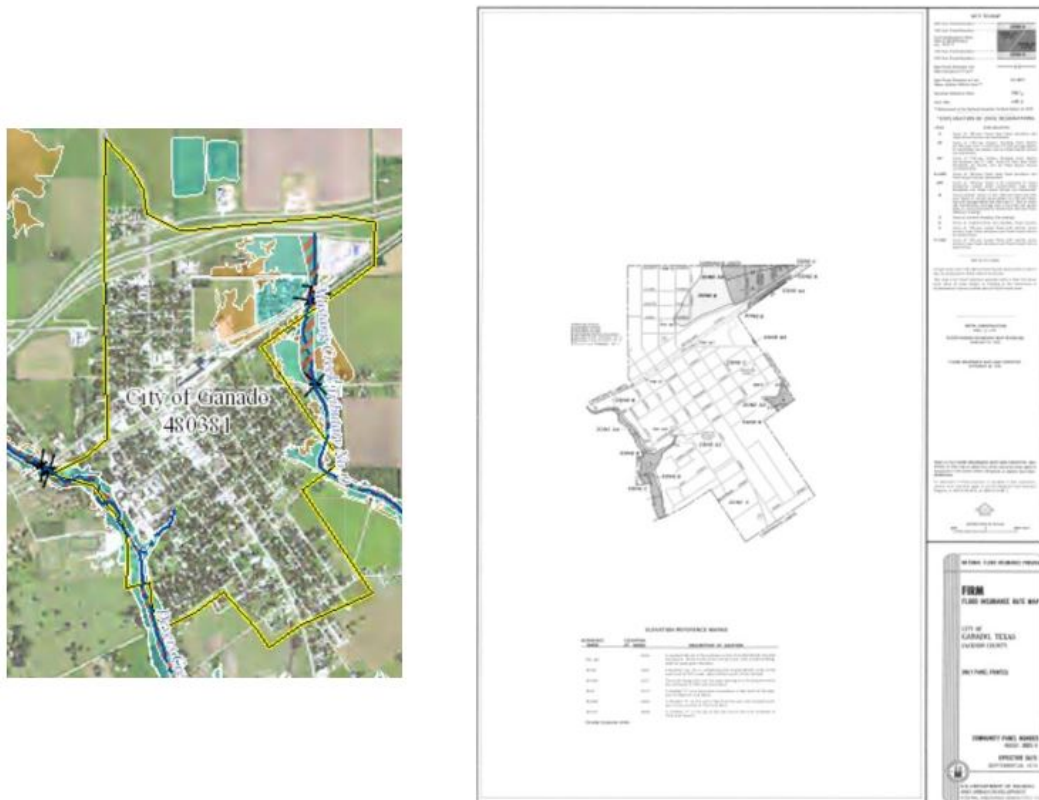


Example 18: City of Turner, Marion County, Oregon. *Source:* The Federal Emergency Management Agency.



Example 19: City of Amity, Yamhill County, Oregon. *Source:* The Federal Emergency Management Agency.





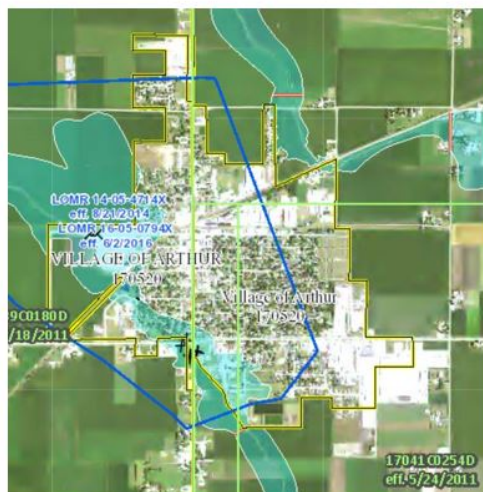
Example 20: City of Ganado, Jackson County, Texas. *Source:* The Federal Emergency Management Agency.



Example 21: City of Yelm, Thurston County, Washington. *Source:* The Federal Emergency Management Agency.



Example 22: Town of Trion, Chattooga County, Georgia. *Source*: The Federal Emergency Management Agency.



Example 23: Village of Arthur, Douglas County, Illinois. *Source:* The Federal Emergency Management Agency.